



# Bucks Pottery and Sculpture Society

Newsletter, September 2019

*Hi members. Welcome to the September newsletter. Thank you again to everyone who has contributed. Hopefully you've been enjoying the many summer events in the sunshine. It's time to get our thinking caps on for the Pottery / Sculpture*

*Competition. As it's being combined with the November meeting this year, there will hopefully be more entries. It's worth having a go as there's a £75 prize for the winner. Happy reading.*  
Yvonne

28 June  
DEMO REVIEW

## Grant Pratt – Blue Matchbox

Yvonne Cornes

As expected, Grant was as charismatic as the last time he gave us a demo, chatting about his experiences and encounters during his life as a potter. He runs the very popular Blue Matchbox Potters Supplies shop and has done so for many years now. When he first began pottery he became immediately obsessed and jumped straight in, buying a wheel, not really knowing what to do. He built his own kiln and did a City and Guilds course. His wife is Turkish and his main inspiration comes from the Turkish pottery tradition. He loves the simple approach and their use of very basic wheels to achieve highly professional results at an incredibly fast rate. He now runs Tilehurst pottery, producing functional tableware.

Grant demonstrated throwing and the use of a laser beam to keep multiple pots consistent sizes. He is very involved with the local community and can never say no to a request. This level of involvement has got in the way of his own development as a maker and he is now determined to avoid commissions and go back to basics and make his own work. Grant says he wants to make 'nice' pots. He says he doesn't have that 'thing' that other potters have. He doesn't like rules.

Grant told us of his experience going through the application process for the first 'Great British Pottery Throwdown' series. He came very close to being included but says he was beaten to the team by Matthew Wilcock. He thinks there was only room for one dreadlock entrant!

Grant runs the 'Mudzine' blog from the Blue Matchbox website. There he gives his thoughts and gripes and generally entertains his followers with his unique outlook! He isn't afraid to give his honest opinion on the industry.

For more info: [www.bluematchbox.co.uk](http://www.bluematchbox.co.uk)



### WE CAN FIRE YOUR WORK

Kiln Firing Service Charges  
(effective 10 Feb 2017)

#### Small Kiln

(32cm diameter x 30cm deep)  
Up to 1199°C – £12 + VAT  
Over 1200°C – £15 + VAT

#### Medium Kiln

(43cm wide x 43cm deep x 58cm high)  
Up to 1199°C – £40 + VAT  
Over 1200°C – £45 + VAT

#### Large Kiln

(45cm wide x 60cm deep x 98cm high)  
Up to 1199°C – £60 + VAT  
Over 1200°C – £66 + VAT

Part loads are charged according to space taken up

Minimum Charge – £7.50 + VAT

Kilns are electric (oxidation) max temp. 1300°C and capable of multi segment firing cycles.

For Terms & Conditions please contact Blue Matchbox



## MUIR TRUST RESIDENCY 2019 – KATIE SURRIDGE, MIXED MEDIA ARTIST

18 September – 18 October 2019 Bucks County Museum, Church Street, Aylesbury HP20 2QP

Katie Surridge has been appointed as the 12th Muir Trust Artist in Residence. She will be selecting items from the stored museum collections and responding to them to create new readings and interpretations.

After a visit to the stores, Katie has decided to focus on the archaeology collections. She tells us:

'I'm interested in the way in which archaeological items are stored. Each precious piece has its own specially labelled container, where the object is protected and held secure in storage foam. I'm fascinated by the abstracted shapes cut into this foam to support the items and will be using these negative spaces to inspire a new series of castings and drawings. I will be casting new relics based on these shapes, with a new categorisation system. I will also be developing interactive ways in which visitors can then dig up these items.'

Katie is passionate about sharing the drama of casting with molten metal and will be demonstrating this as part of her open studios on 28 September. She will also be holding a metal casting workshop on 12 October and will give a talk about her work on 7 November.

An exhibition of residency work will open on 9 November and run until the end of the year.





## RAKU DAY – 14 JULY

A big thank you to Elaine, Carol, Jeremy and Paula for putting on another great day. Once again we were very lucky with the weather and as always there was a diverse range of lovely work produced. Carol and Jeremy worked so hard successfully firing all of our work as did Paula on the smoke firing. This year the kilns were set up beside Elaine's studio, in a space that has been prepared awaiting the installation of her new gas kiln. Thank you Elaine for looking after us and for providing hot drinks and a never ending supply of yummy flapjacks.



## EDDIE KENT RAKU DAY



I was fortunate to make it to two raku days this summer. It was the first time I've attended one of the Phoenix Studios' workshops. I was very impressed by the studios and environment, complete with roaming hens adding to the atmosphere. Located on the edge of Towersey near Thame, it's a very relaxing rural setting. Eddie is a real master of his front loading kilns. Caroline Chilton also attended and had some great results.

The pic on the right was sent by Max, showing Eddie in his raku firing area at the Towersey festival.

Eddie did four firings a day over four days in the incredible heat of the August bank holiday – a marathon effort.



## ART IN CLAY – HATFIELD 16 - 18 AUGUST

Jane sent in the first two pics and comments from her day at Hatfield: "I saw sheep heads, not individual like Richard does; also these interesting garden sculptures by Wendy Lawrence. It was fun going round the tents and seeing people who have been to talk and demonstrate at BPSS meetings."

Max sent in the pic of Carol chatting to Chantal Fordham at Chantal's stand.



## CELEBRATING CERAMICS – WATERPERRY 19 - 21 JULY



It was so great to have this new event at Waterperry, also 'Handmade Oxford (part of a series of "Handmade" events across the country) following the cancellation of Art in Action a few years ago.

There were about nine different zones and a lot of artists whose work I hadn't seen before. All very inspiring and I'll definitely go if it's on again next year.



## Membership News

A very warm welcome to Jane Dow who joined Bucks Potters in July. We look forward to seeing you at the meetings and hope you will all enjoy being involved in the society. Jane has written a few words below.

Caroline Chilton joined the society at the end of the last quarter. She has written a few words telling us about herself and her work.

### Caroline Chilton

Hi, I'm Caroline, a lady who has rediscovered her passion for ceramics, thanks to Connie Fielder's evening classes, and after studying to A level at school many moons ago!

Since then my enthusiasm has grown and I have recently purchased my own kiln. I am now regularly making hand built sculptures and experimenting with finishes and glazes.

Last summer a friend asked me to take part in Artwave in Sussex, creating rainforest creatures for his display. A great experience.



### Jane Dow

45 years ago I dabbled, then, 20 years ago I was very lucky to have had Kevin Millward and Neil Brownstone as my tutors at Bucks College (the best of times).

Family commitments came before my pottery, but now I'm teaching Adults with Learning Disabilities and loving it. Decided to take the plunge and open a small workshop.

New venture: "Pop in"

The Pottery Place, Lower Court Farm, Lane End. HP14 3JP.

2-5pm on 6.10.2019. All welcome.

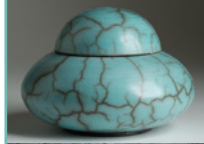


## UP AND COMING BUCKS POTTERS MEETINGS at Little Kingshill Village Hall, HP16 0DZ



### Peter Keegan – 8pm, 25 October

Peter Keegan is an award-winning artist living and working in Buckinghamshire, specialising in painting. Peter will be speaking on the importance of observation and drawing skills in our work. He leads a number of painting and drawing courses.



### The Pottery & Sculpture Competition theme is COAST

### Ian Fraser / Pottery & Sculpture Competition – 8pm, 29 November

Ian produces thrown ware in naked raku and stoneware. He loves the bright colours of the raku glazes and the more subdued tones of stoneware glazes.

**Pottery & Sculpture Competition:** It was decided at the last committee meeting to forego the December Christmas party this year and have a combined Demo and Competition Event for November. The competition will be judged by Ian Fraser. The theme is 'Coast'. It's open to all artists, not just members and must contain a ceramic element. **£75 for first prize!**

### *I bought this because...*

... I saw it being made at the Dacorum and Chiltern Potters Guild Open day. It is by Jim Robison. He commented at the end that he had a few spaces left on his course.

I spent an amazing week in Yorkshire learning loads from him and the other seven people on the course. Jim and Liz, his wife, were generous with their hospitality, knowledge and wealth of stories.

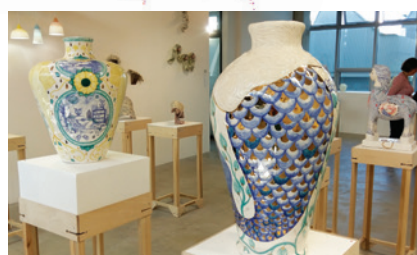
I couldn't resist this pot, especially once I knew it had been made as I watched.

**Carol Read**



### Potters' tip from Alison Pink

When using imprinted texture of various types I dust the clay surface lightly with cornflour first to prevent the clay from clogging the shell, rubber stamp or similar. If I'm repeating a pattern I may instead lightly brush WD40 onto the item I'm pressing into the clay.



Seen at the 2019 Ceramics and Glass Degree show at the RCA

## WYCOMBE COURT ARTISTS WINTER EXHIBITION

22, 23 and 24 November 2019

10am – 3pm

Hughenden Manor,  
High Wycombe, HP14 4LA

20% of sales will be donated to Charity



Raku Elephant by Caroline Selvey

**PAINTINGS, SCULPTURE,  
CERAMICS JEWELLERY, GLASS, FELT**

## VISITING THE CULTURAL AREA OF ANDALUCIA?

Traditional village house to let in Polopos village, south of Granada, Andalucia Spain. Sea views. Wild countryside.

### Wonderful walks:

4692 to 4695 on [www.walkingworld.com](http://www.walkingworld.com). Fascinating local Fajalauza ceramics. Village 788m high, 10km from sea. Olives, almonds, vines.

**£180-280 per week**

Email: [scarapiet@hotmail.com](mailto:scarapiet@hotmail.com)



## POTTERYCRAFTS LIMITED

"Touching earth through the hands of a potter"

Roderveld wheels, equipment & POTTERYCRAFTS kilns are built by our dedicated team to an exceptionally high standard at our warehouse in Stoke-on-Trent, England.



"Our UK manufactured Wheels & Kilns"



"For the beginner and expert in ceramics & pottery"




- Kilns
- Wheels
- Glazes & Stains
- Raw Materials
- Bisque & Moulds
- Extensive Range of Clays
- Helpful & Friendly Advice

Potterycrafts Ltd  
Campbell Road, Stoke-on-Trent, ST4 4ET



Tel: 01782 745000 [www.potterycrafts.co.uk](http://www.potterycrafts.co.uk)  
Fax: 01782 746000 [sales@potterycrafts.co.uk](mailto:sales@potterycrafts.co.uk)

## Some dates for your diary

Date	Event information	Venue
18 Sep - 18 Oct	<b>Muir Trust Residency 2019</b> – Katie Surridge, mixed media artist See article on front page.	Bucks County Museum, Church St, Aylesbury HP20 2QP
25 Oct	 <b>Peter Keegan Demo</b> See full details on previous page.	Little Kingshill Village Hall, HP16 0DZ
26–27 Oct	<b>Oxford Ceramics Fair</b> – More than 60 of the UK's leading potters will be exhibiting and selling their ceramics.	St Edwards School, Woodstock Rd, Oxford, OX2 7NN
16–17 Nov	<b>Art in Clay, Farnham</b> – A smaller indoor event than Hatfield, held in the lead up to Christmas – a good place to pick up a unique hand made gift.	The Maltings, Bridge Square, Farnham, Surrey GU9 7QR
29 Nov	 <b>Ian Fraser / Pottery &amp; Sculpture Competition</b> See full details on previous page.	Little Kingshill Village Hall, HP16 0DZ

### About the society

The Society was formed in 1963 and welcomes all artists working in 3D. Membership costs £20, £30 for a family and £12 for full-time students. Membership provides access to monthly demonstrations, several hands-on workshops, and a quarterly newsletter.

We are on facebook and members can put an image and contact details on the Society's web page:

[www.buckspotters.com](http://www.buckspotters.com)

### The Committee

The Committee meets regularly to develop the programme, organise the Annual Exhibition and review costs. If you find a good speaker who could demonstrate to the Society, please tell us. Also, if you have ideas you would like to raise with us, please do so at the monthly meeting or email:

[chris.inder@gmail.com](mailto:chris.inder@gmail.com) 

### GDPR information

The information which you provide to us on your membership form will be used solely for the purpose of processing your membership and dealing with you as a member of BPSS. The data will not be shared with any third party for marketing or commercial purposes without obtaining your explicit consent.

Our GDPR policy is available to read on the BPSS website.

## BPSS Contacts

<b>Chairperson:</b>	Chris Inder <a href="mailto:chris.inder@gmail.com">chris.inder@gmail.com</a>	Tel: 01844 342355
<b>Secretary:</b>	Pam Cawley <a href="mailto:elsinore.lotus@btinternet.com">elsinore.lotus@btinternet.com</a>	Tel: 01494 481359
<b>Treasurer:</b>	Jeremy White	Tel: 01296 696960
<b>Membership Secretary:</b>	Jane Ostler <a href="mailto:j.ostler@btinternet.com">j.ostler@btinternet.com</a>	Tel: 01494 442565
<b>Editor/Designer:</b>	Yvonne Cornes <a href="mailto:y.cornes@talktalk.net">y.cornes@talktalk.net</a>	Tel: 01442 822491