



# Bucks Pottery and Sculpture Society

Newsletter, December 2018

Hi members,

Welcome to the December issue.

I hope the Christmas fairs have been busy for those of you participating.

This issue only has two demos reviewed. This has given me space to indulge in photos from the Ashmolean (back page) and also the fantastic 'Oceania' exhibition at the Royal Academy. I may be biased as I lived in that part of the world from the age of three until my late 20's, but it is definitely worth a visit. I hope you've read this in time as it closes on 10 December, only a few days after this newsletter gets emailed out.

Don't forget the 'Pot Luck' theme for the Peter Stocker Christmas party 'making' competition'. There may still be time if you've just received the newsletter. See the ad below.

A very happy Christmas and New Year to you all. I look forward to seeing you in 2019.

Yvonne

## 28 September DEMO REVIEW

Kirsten's evening was a popular one. I counted 37 people in attendance. Kirsten is a local ceramicist and member of the Buckinghamshire Craft Guild where she does two shifts a month manning the gallery.

Kirsten became interested in ceramics during a Mixed Media course at Aylesbury College. Her work has always been influenced by nature: grasses, leaves, bullrushes, rocks, seeds, sand and the effects of the weather. She explores these elements on coil built and thrown monochrome forms. She achieves textures and effects during the making process rather than through glazes.

Kirsten's studio is at Westbury Arts Centre. She works there with artists of different disciplines and fellow ceramicist Mark Compton. They do raku and soda firing there and run raku workshops including obvara work.

The soda firing is done in a Joe Finch style brick-built kiln which takes three days in total. She says 80% of the soda work is rubbish! She also has an electric kiln at home.

Kirsten demonstrated one of her decorating methods on a thrown pot. She had an energetic working method showing the excitement she feels towards the process.

Using Valentines Smooth Black clay, she threw a cylinder and painted on porcelain slip (*top right*). Kirsten finds that porcelain slip stays whiter than white slip. She then scored textures into the slip (*top right*). She dried it off a bit, then applied sodium silicate, diluted in water. Kirsten then continued to throw the pot into a wider bowl which created a cracked effect in the slip (*middle*). She links both hands while throwing. Once dry it is bisque-fired to 995°C, followed by a stoneware glaze firing to 1245°C. Thank you Kirsten for an inspiring evening.

[www.westburyartscentre.co.uk](http://www.westburyartscentre.co.uk)

## KIRSTEN HOLUJ

Yvonne Cornes



You are invited to the  
**BPSS Christmas Party**  
on Friday 14 December,  
8-10pm  
at Little Kingshill Village Hall

The theme for this year will be:



- ◆ Take part in the Quizzes ◆
- ◆ Mulled wine provided ◆

Please bring along some nibbles to share - savoury or sweet

## 30 November DEMO REVIEW

# HOLLY INGLIS

Yvonne Cornes

Holly graduated in Applied Arts at the University of Wolverhampton in 2012. She gave us a fascinating demonstration and talk about her hand-building methods and her experience as a ceramicist.

Holly's work is strongly influenced by creatures both fictional and non-fictional and she delves into their origins and folklore. She once worked at the Natural History Museum at Tring, a place she still frequents in order to draw and understand the forms which she then distorts. She also spends time at the Cotswold Wildlife Centre and Tiggywinkles. Holly likes primitive working methods and is interested in Bronze Age pottery and pit firings, smoke and raku firings.

She uses line for her calligraphic pieces, following the muscle lines and form (*2nd from top*). She fires these up to 1210°C.

Holly brought in several beautiful sketchbooks for us to flick through in the interval. Her knowledge of the behaviour and anatomical details of her subjects is impressive. It was clear to me that it is her background knowledge that helps to give her pieces their personality.

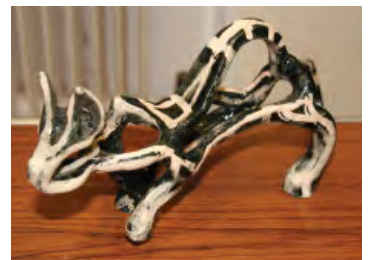
Holly demonstrated the making process of a little bird which was simplified from one of her drawings (*far left*). It was based on her finished piece (*2nd from left*). For her

basic head shape she used a polystyrene ball (later removed) with loo roll around it, then a slab of clay around it for the basic shape.

She uses cocktail sticks through the lengths of the solid legs to provide an airhole which becomes a continual airflow into the body. The sticks are removed before there is too much shrinkage. Holly experiments a lot with her finishes and often uses food to smear onto her greenware. She likes the effect of potassium from banana skins and the 'chicken pox' effect from peanut butter. Marmite gives a lovely shimmer. They smell a lot in the kiln but she puts up with this for the results!

Holly told us about the '5 year rule'. She said that when starting out it takes two years before you start making money. Years three and four have a gradual increase in income and year five is OK. Apparently many galleries wait until you have reached the five year point before they want to invest in you. This is a test as to whether you have 'made' it. Holly now does five or six shows a year.

Thanks Holly, for a very entertaining evening.  
[www.hliceramics.com](http://www.hliceramics.com)



## GLORIOUS GLASS!

Celebrating 20 years of the Contemporary Glass Society

2 February – 23 March 2019

Come and experience the magical colours, textures, use of light and wide variety of techniques used by glass artists. This exciting exhibition celebrates twenty years of the Contemporary Glass Society – an international organisation that supports and promotes the work of glass artists, collectors and glass lovers. It is part of a series of exhibitions that are being hosted around the country between 2018 and 2020.

The exhibition will showcase the work of 39 glass artists from the surrounding area and demonstrate the glorious and diverse nature of contemporary glass. Many of the works on display will be for sale. There will be an associated programme of events including glass workshops for families and adults, a Forum Day with speakers on glass and a Glass Makers Fair of affordable pieces.

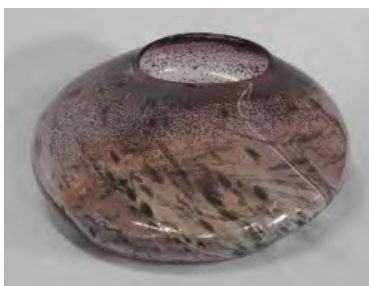
Check out the museum website nearer the time for further details.

[www.buckscountymuseum.org](http://www.buckscountymuseum.org)

This exhibition will be developed by local members of the CGS and it opens on Saturday 2 February 2019 with the opportunity to meet many of the exhibiting artists that afternoon.

**Mel Czapski**

Curator of Art & Studio Ceramics,  
Bucks County Museum, Church Street,  
Aylesbury HP20 2QP

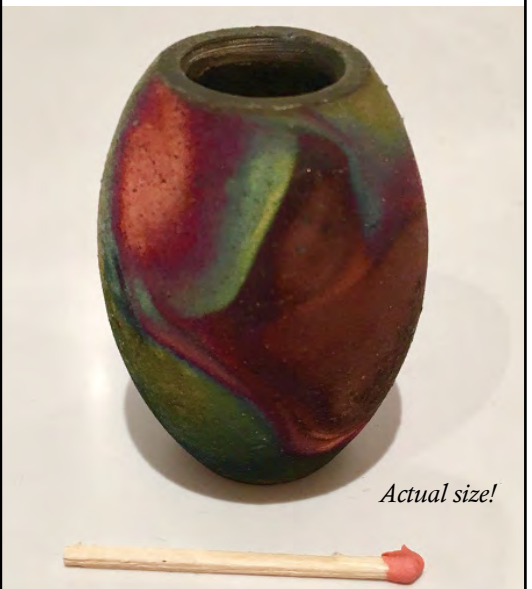


*I bought this because...*

...I don't need any more 'stuff' in the house. I try to choose things on that basis.

This wee Raku pot came into my life at Art in Clay. It was made by Andrew Niblett.

Tiny, perfect and Raku'd to within an inch of its 2 inches!! **Alison Pink**



*Actual size!*

## NEWS & INFO

A very warm welcome to our new member Lucinda Etchell. We hope you will enjoy getting involved in the society.

### A QUESTION FOR MEMBERS

from Debs Taylor

Is anyone looking to off-load (obviously at a cost) any of the following?

- An electric potters wheel.
- A banding wheel
- A small kiln

Big asks but you never know what's out there until you ask!

### GDPR INFORMATION

from Jane Ostler

The information which you provide to us on your membership form will be used solely for the purpose of processing your membership and dealing with you as a member of BPSS. The data will not be shared with any third party for marketing or commercial purposes without obtaining your explicit consent.

Our GDPR policy is available to read on the BPSS website.

### INGENIUS TIP

from Jane Ostler

I saw my first cut sponge in a friend's kitchen next to their sink. The sponge was cut and propped up vertically, which allowed it to dry evenly. I thought about all of my students' lost sponges and the countless sponge parts that I had found when cleaning out the pug mill. Soon after, I started cutting my throwing sponge so that I could place it over the rim of my throwing bucket to keep it from getting lost in the slop.



## UP AND COMING BUCKS POTTERS MEETINGS

at Little Kingshill Village Hall, HP16 0DZ



### Chris Bowen – 8pm, 25 January

Chris is an experienced potter with a history of working in the arts and crafts industry. He gained an MA in Ceramics and Glass from the Royal College of Art. Skilled in pottery, Art Education, and professional food production, Chris now creates bespoke food based ceramics for fine dining and Michelin starred restaurants.



### David Wright – 8pm, 22 February

David has been making pots since 1974, working in rural Leicestershire. He works alone and is self-taught. Boxes, bottles and bowls are his reference point. The pots are glazed with simple ash glazes from the ashes of different woods – traditional Shino glaze is also used to give warm reds and oranges. The pots are fired in a wood fuelled kiln to over 1300°C, and are imbued with a warmth and beauty.



### Jessica Ecott – 8pm, 29 March

Jessica makes beautiful glass sculpture panels for wall art, panel designs with lights, light sculptures and jewellery. Her glass captures the changes of the light, and with it she achieves subtle internal effects similar to those in watercolour. In her sculptural pieces she often explores the contrast between materials, especially the clarity and ethereal qualities of glass against the earthiness of wood.

## WATERPERRY Exhibition news

There will be a 'Celebrating Ceramics' festival at Waterperry from 19 until 21 July 2019. The Art in Action team will be collaborating with Craft in Focus for the event. It will feature 100 of the finest contemporary ceramic artists from the UK and beyond. There will be lectures by leading ceramic artists as well as demonstrations. The event will be set against the beautiful backdrop of Waterperry House and Gardens. There will be food, drink and live music. Applications are open until 21 December on <https://www.celebratingceramics.co.uk>

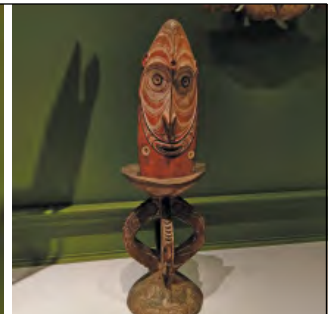
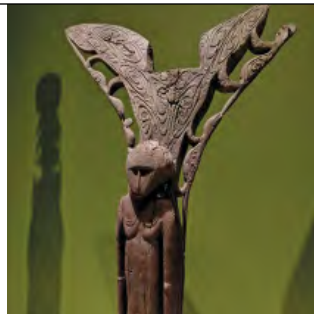
*Thank you very much to Jennifer Lowe for informing us on this.*



## OCEANIA EXHIBITION

ROYAL ACADEMY

until 10 December



# The Muir Trust

Artist in Residence Scheme at Buckinghamshire County Museum

## 12th Muir Trust Residency in collaboration with Bucks County Museum Trust

Applications invited from established, mid-career, UK-based studio artists who wish to develop their creative practice by working with the Bucks County Museum collections. The residency will be based in Aylesbury for 20 days during mid-September to late-October 2019.

The chosen artist will select items from the mixed collections in store and respond to them through their own medium to create new readings and interpretations. The artist will have a working space in the museum to display the selected exhibits and develop their artistic responses. The residency is followed by a solo selling exhibition illustrating this creative process and its results.

Applicants must have a developed personal style and be at a point in their career where they want the opportunity to re-invigorate their practice. Work must be suitable for demonstration and execution in a museum environment within the given timescale. You must be able to engage with visitors about your work and inspirations through open studio sessions, a workshop for adults and a public talk.

We welcome re-applications from applicants to our previous residencies.

An award of £3,000 will be paid, plus an allowance for subsistence/travel expenses.

**Closing date for applications is 20 December 2018 and interviews will be held on 7 February 2019.**

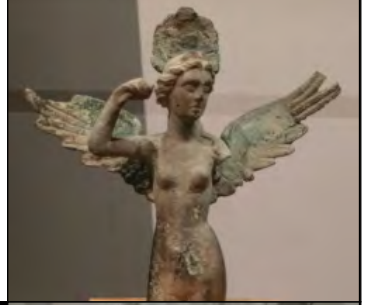
For further information and an application form please email [art@buckscountymuseum.org](mailto:art@buckscountymuseum.org)



Bucks County Museum Trust  
Church Street  
Aylesbury  
Bucks HP20 2QP



## ASHMOLEAN MUSEUM



## POTTERYCRAFTS LIMITED

"Touching earth through the hands of a potter"

Roderveld wheels, equipment & POTTERYCRAFTS kilns are built by our dedicated team to an exceptionally high standard at our warehouse in Stoke-on-Trent, England.



"Our UK manufactured Wheels & Kilns"



"For the beginner and expert in ceramics & pottery"



- Kilns
- Wheels
- Glazes & Stains
- Raw Materials
- Bisque & Moulds
- Extensive Range of Clays
- Helpful & Friendly Advice

PotteryCrafts Ltd

Campbell Road, Stoke-on-Trent, ST4 4ET



Tel: 01782 745000 [www.potteryCrafts.co.uk](http://www.potteryCrafts.co.uk)  
Fax: 01782 746000 [sales@potteryCrafts.co.uk](mailto:sales@potteryCrafts.co.uk)

### About the society

The Society was formed in 1963 and welcomes all artists working in 3D. Membership costs £20, £30 for a family and £12 for full-time students. Membership provides access to monthly demonstrations, several hands-on workshops, and a quarterly newsletter. We are on facebook and members can put an image and contact details on the Society's web page: [www.buckspotters.com](http://www.buckspotters.com)

### The Committee

The Committee meets regularly to develop the programme, organise the Annual Exhibition and review costs. If you find a good speaker who could demonstrate to the Society, please tell us. Also, if you have ideas you would like to raise with us, please do so at the monthly meeting or email. 