



Bucks Pottery and Sculpture Society

Newsletter, June 2019

Hi members,
Welcome to the June newsletter. Thank you again to everyone who has contributed. Hopefully you're enjoying the summer events whether you're showing, attending or both, despite some

disappointing weather. Hopefully that will now change!
We've had great meetings in the last quarter. Hands on workshops featured in two of them and both were very well attended.
Happy reading, Yvonne

29 March
DEMO REVIEW

Jessica Ecott, Glass Artist

Dorothea Reid

We were treated to a slide show of the range of techniques that Jessica uses casting, fusing, and slumping. She has undertaken several challenging commissions.

The casting technique for glass involves making a clay model, then coating the model with silicon so you can make repeat models. Fill the silicon casing with liquid wax, and then set it in plaster. This is then steamed out using a wallpaper steamer. When the silicon casing is removed it leaves a plaster mould into which the molten glass frit will drip. Firing can last for weeks. Once the piece is fired it has to be cold-worked to get rid of rough edges and then polished. It is a very long, complicated process.

Jessica translates her sketches into wire drawings, which she includes in her fused glasswork. She likes using copper foil and mica for fusing and often uses wood to offset and hold her work.

She prefers to use float glass 4mm thick which fuses at 810°C and slumps at 680°C. Fuse firing takes 30 hours. If she is using two layers to trap objects, she will use 3mm float glass. She never uses 2mm glass, which tends to shrink.

She rolled out some clay, drew a design into it, and poured plaster mixed with flint over it. The dry plaster base is then sprinkled with oxides, mica, frits, and topped with a layer of glass for a single layer fuse.

She advised us that copper can go black at the edges, and silver leaf goes yellow. Gold leaf burns away – gold mica works instead. Kitchen foil is good to use. Metal oxides can bubble. She drills holes in the work for hanging after firing.

Jessica advised putting ceramic fibre under the work, and also uses a special PVA glue for glass, which tacks the fusing materials on to the piece, making it easier to place in the kiln.

Her fuse firing programme is: 4-5 hours up to 810°C; Hold for 10 minutes;
Crash cool to 200°C; Hold for 2 hours minimum; Slow cool to 00°C.

Jessica's work can be seen on www.jessicaecott.co.uk



DEBORAH HOPSON-WOLPE – Pots and Prints: 13 July - 14 September 2019

Bucks County Museum, Church Street, Aylesbury HP20 2QP



This summer at the museum is a solo show for Olney potter and printmaker, Deborah Hopson-Wolpe. She grew up in an intensely creative household with her parents – Berthold Wolpe, typographer and graphic designer, and Margaret Wolpe, sculptor and silversmith. There is a small display of their work within the show.

Deborah studied ceramics in London and Japan before opening the Olney Pottery in 1975. She produces thrown vessels decorated with type and freely cut and drawn letters. She also makes individual hand-built items in stoneware, porcelain and high fired earthenware.

Deborah is also an accomplished printmaker – etchings, screen prints, collagraphs, wood engravings, wood cuts and lino blocks. Her father's fascination with drawing and lettering has always formed an important part of her work and is reflected in many of the pieces on display. The exhibition has free entry and works are for sale.

26 April
DEMO REVIEW

ELAINE WELLS

Yvonne Cornes



Elaine attracted an audience of over 30 people, all interested to hear of her development following her appearance on the Great British Pottery Throwdown. Her feet have hardly touched the ground since then. After working in Kate Malone's studio for some time, she decided to apply for Clay College at Middleport Pottery, where the Throwdown took place.

She is now at the end of the two year course and although she says she is exhausted from it she came across as totally inspired.

Apart from her long weekly commute (Elaine was renting a flat there), she worked really hard, determined to get the most from the course. It covered all aspects of working with clay: technique, good practice, experimentation, the running of a studio including the business side and marketing. Elaine is now a true advocate of experimentation in ceramics and encouraged us to dig up clay from our gardens or wherever we can find some, to get creative and fire it.

The students were taught by several big names such as Nigel Lambert, Clive Bowen, Josie Walters, Jo Connell, Ruth King, Sasha Wardell, Margaret O'Rourke, Phil Rogers, Nic Collins and John Jelfs. I was amazed to hear that these potters all taught the students their exact processes. Elaine had on display the works she produced which looked like exact replicas! (See the Phil Rogers example - right). Prince Charles visited the college as he is a patron of ceramics. Elaine told us an amusing story about a joke she shared with the prince.

In the 2nd part of the evening we were each given cast porcelain greenware cylinders to turn into decorative lights. We applied our own latex design by brush. Once dry we sponged off the exposed porcelain, creating thinner areas which would later show the light through more strongly, revealing the design. Elaine brought in greenware and fired examples (see bottom pic). We took our pots home to fire ourselves. Mine is still waiting for my next stoneware firing.

Thank you so much for a truly inspiring evening Elaine. Like me, I'm sure everyone is looking forward to the next instalment!

There will be three exhibitions of the graduates' work in various locations during August. See the ad on the back page for details.



Main pot - created in the style of Phil Rogers



Examples supplied by Elaine for our workshop

31 May
DEMO REVIEW

PAULA SUTTON DECOUPAGE WORKSHOP

Yvonne Cornes



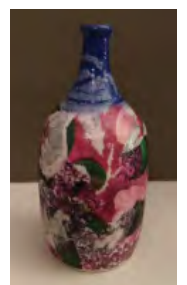
Bucks Potter Paula Sutton has many years of experience making ceramics. When she once had a dilemma on what to do with a crack on a pot, she decided to try decoupage. It is usually a technique which is applied to non-ceramic surfaces but Paula was so pleased with the result that she now uses it by choice to decorate certain areas on some of her ceramic work. She also applies it to tiles.

In the first part of the evening Paula talked us through the process, supported by many examples which she had on display. She had also prepared a very informative instruction sheet for us to take away.

It is important that the ceramic surface to be decoupage is white, in order to keep the colours vibrant. Richard and Carol had kindly made a variety of small white vases with an attractive blue neck for us to practice on. Paula had also made tiles for us to work on. We first worked with the vases, selecting from a range of different paper napkins and dismantled them from 3 ply into separate layers. Using the top decorated layer, we then tore it into small manageable pieces to be stuck on, working from the bottom upwards. Mod Podge is an adhesive which comes in many different finishes and doubles as a sealant. One version is dishwasher safe and there is one which is suitable for outdoor use. It is also possible to varnish the surface afterwards. A lot of care needs to be taken to stop the thin layer of paper from wrinkling. The glazed neck is a useful means of holding the vase while working, as demonstrated by Paula above.



Once the vases were finished, Paula showed us how to decorate the tiles. I don't think many people finished these but we could take away the necessary elements to finish them at home. The vase example shown here is my own as unfortunately I hadn't been quick enough to photograph any of the many varied and imaginative results produced around the room. It's a very quick way of achieving a decorative effect.



Thank you Paula for a very enjoyable evening.

Membership News

There have been four new members since the last newsletter: Emma Pegrum, Colin Legood, Sally Short and Caroline Chilton. A very warm welcome to you all. We look forward to seeing you at the meetings and hope you will all enjoy being involved in the society.

Emma has written a few words and Caroline will do so in the next newsletter.

Emma Pegrum



I've been doing adult education ceramics for a few years and want pottery to be a bigger part of my life. Now that my other work is freelance

I have a bit more flexibility to do this. Being part of my local community of potters feels like an essential place to be.

Tips on techniques and processes, equipment and resources, EVERYTHING, gratefully received!

Elaine Wells – Wood Ash search

Elaine is in desperate need of wood ash. Any quality and with coal content is fine. She needs it for glazes and is happy to pick it up.

If you can help please contact Elaine.

Shivashtie Poonwassie – Equipment search

Is anyone selling or knows of someone who is selling a small kiln? Any other small equipment or tools etc would also be of interest.

Please contact Shivashtie by email.

Useful Tip from Jane Ostler

I can't take any credit for this. I found it on the internet, but it's a great idea.

Make a tool holder for your wheel from a section of pool noodle.



UP AND COMING BUCKS POTTERS MEETINGS

at Little Kinghill Village Hall, HP16 0DZ



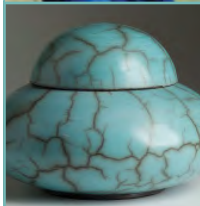
Debbie Page – 8pm, 27 September

Debbie is a studio potter based in South Oxfordshire. She uses coils and moulds. Her influence is from Korean ceramics and she admires the Japanese concept of Wabi Sabi. Debbie is Treasurer of The West Forest Potters and associate member of The Oxfordshire Craft Guild and The Craft Potters Association.



Peter Keegan – 8pm, 25 October

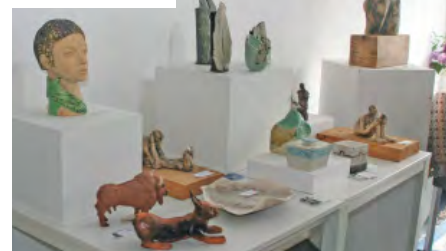
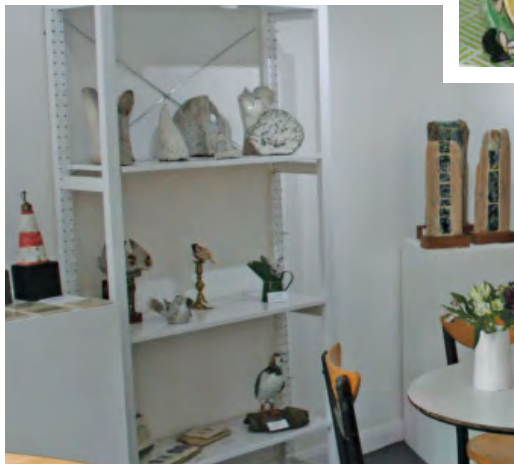
Peter Keegan is an award-winning artist living and working in Buckinghamshire, specialising in painting. Peter will be speaking on the importance of observation and drawing skills in our work. He leads a number of painting and drawing courses at The Courtyard Art Studio in a beautiful English country house in Buckinghamshire.



Ian Fraser – 8pm, 29 November

Ian produces thrown ware in naked raku and stoneware, using similar forms in both mediums. He loves the bright colours of the raku glazes and the more subdued tones of stoneware glazes. Ian lives in Cumnor near Oxford. He recently returned to ceramics after many years as a photographer.

IMAGES FROM THE B PSS EXHIBITION AT THE OPEN DOOR GALLERY







RAKU DAY Sunday 14 July

At the time that this newsletter went to print, there were still two places available for this event. The information was sent at the beginning of June by email.

CELEBRATING CERAMICS WATERPERRY 19 – 21 JULY

This fine selection of artistic talent on display is set against the backdrop of Waterperry. It includes demonstrations and lectures by leading ceramic artists. Also an amazing range of food, drink and music to complement your day.

Some dates for your diary


Date	Event information	Venue
5 – 7 July	International Ceramics Festival 2019 – Demonstrations, firings, talks, discussions, films, exhibitions, performances. www.internationalceramicsfestival.org	The Arts Centre, Aberystwyth University SY23 3FL
'til 13 July: 13 July – 14 Sep:	Samurai : Warriors of Ancient Japan Deborah Hopson-Wolpe – Pots and Prints See article on front page. www.buckscountymuseum.org	Bucks County Museum, Church Street, Aylesbury, HP20 2QP
14 July	 Raku Day See previous page for more details.	Gardendene, 33 Bois Lane, Chesham Bois, HP6 6BT.
19-21 July	Celebrating Ceramics: www.celebratingceramics.co.uk See previous page for more details.	Near Wheatley, Oxford. OX33 1LA
16th – 18th August	Art in Clay Showcasing some of the finest ceramics by makers in the UK and Europe	Hatfield House Hertfordshire AL9 5NQ
7-29 Sep	Herts Open Studios: www.hvaf.org.uk	Various
27 Sep	 Debbie Page Demo See full details on previous page.	Little Kingshill Village Hall, HP16 0DZ
25 Oct	 Peter Keegan Demo See full details on previous page.	Little Kingshill Village Hall, HP16 0DZ
26–27 Oct	Oxford Ceramics Fair – More than 60 of the UK's leading potters will be exhibiting and selling their ceramics.	St Edwards School, Woodstock Rd, Oxford, OX2 7NN
29 Oct	 Ian Fraser Demo See full details on previous page.	Little Kingshill Village Hall, HP16 0DZ



About the society

The Society was formed in 1963 and welcomes all artists working in 3D. Membership costs £20, £30 for a family and £12 for full-time students. Membership provides access to monthly demonstrations, several hands-on workshops, and a quarterly newsletter. We are on facebook and members can put an image and contact details on the Society's web page:
www.buckspotters.com

The Committee

The Committee meets regularly to develop the programme, organise the Annual Exhibition and review costs. If you find a good speaker who could demonstrate to the Society, please tell us. Also, if you have ideas you would like to raise with us, please do so at the monthly meeting or email. 

GDPR information

The information which you provide to us on your membership form will be used solely for the purpose of processing your membership and dealing with you as a member of BPSS. The data will not be shared with any third party for marketing or commercial purposes without obtaining your explicit consent.

Our GDPR policy is available to read on the BPSS website.

POTTERYCRAFTS LIMITED

"Touching earth through the hands of a potter"

Roderveld wheels, equipment & POTTERYCRAFTS kilns are built by our dedicated team to an exceptionally high standard at our warehouse in Stoke-on-Trent, England.



"Our UK manufactured
Wheels & Kilns"



"For the beginner and expert
in ceramics & pottery"



- Kilns
- Wheels
- Glazes & Stains
- Raw Materials
- Bisque & Moulds
- Extensive Range of Clays
- Helpful & Friendly Advice

PotteryCrafts Ltd

Campbell Road, Stoke-on-Trent, ST4 4ET



Tel: 01782 745000 www.potteryCrafts.co.uk
Fax: 01782 746000 sales@potteryCrafts.co.uk