



Bucks Pottery and Sculpture Society

Newsletter, June 2020

Hi members. This is the first and hopefully the only newsletter during lockdown. With no meetings to report on, thanks so much to those of you who have sent in stories of what you've been up to. It's also nice to be able to give our new member – Claire Friend, a bit more than the usual

allocated space for her intro, with her interesting account on her experiences with ceramics so far. Our popular lockdown challenge information & results are all viewable on the website. See the Raku day info on the back page! We'll keep you updated on meetings as soon as we know. Yvonne

Bucks Potters – A brief trip down memory lane: 1963 and onwards

Elaine Wells has delved into her archives from when she was chairperson back in the 1990's. She has found some fascinating BPSS history forming a treasure trove of articles and images dating back to 1963 when the society was formed. Here are a few for you to peruse. These historical documents are being kept by the society with a view to being passed down through the generations.

1960's – Old Amersham Town Hall



1971



1973

1977



1999



POTTERY TRIBUTE: Mildred Slatter (right), founder of The Buckinghamshire Pottery and Sculpture Society, who died this year. With her is fellow founder Adele Verdufer.

50th Anniversary cake



To Mildred's memory

A POTTERY society's annual exhibition will commemorate the life of its founder member who died this year. Mildred Slatter, who founded the Buckinghamshire Pottery and Sculpture Society in 1963, died in June aged 90. Mrs Slatter, who lived in Fulmer up to her death, began teaching pottery classes throughout the area in 1946 and has inspired hundreds of local potters. She was also renowned for her poetry and music writing, examples of which were performed at her funeral at St John's Church in High Wycombe. A selection of her work as well as photos and descriptions of her life will be on show at the exhibition alongside a variety of work by members of the society. The exhibition and sale will be held at Old Amersham Town Hall from Saturday November 20 until Saturday November 27 1999 from 10am to 5pm.

Projects sent in by members during Lockdown

Heron and Pelican – Hilary Audus



Two of my most recent pieces, the usual avian subject matter! Both pieces very much a product of my lack of kiln height – only 11.5 inches, having only a small top-loader.

Hérons do occasionally sit like this, and it does make for a more quirky look at the bird.

The Pelican – I started out intending to sculpt the bird with more of a stretched neck, but kiln height got in the way once more, but I think I'm happier with the end result.

Hilary

Follow-up from the bird workshop in February – Lucinda Etchell

The bird workshop in February was the first (and only!) meeting I have attended.

I loved the workshop and really enjoyed trying something new with clay. I had never attempted a bird or animal before.



I am still quite a novice but with Jane Ostler's help I set up my new second-hand kiln and the bird was in the very first firing. It survived that, so I glazed it (with a brush-on glaze called 'spiced cream') and here is the finished result of my partridge type thing. Not bad for a first go! Thank you for initiating it!

Lucinda

Cartoony ball creatures – Holly Inglis



Not much to report for this newsletter other than I have started experimenting with other cartoony ball creatures other than garden birds. I made a long eared brown bat and 2 pigs!

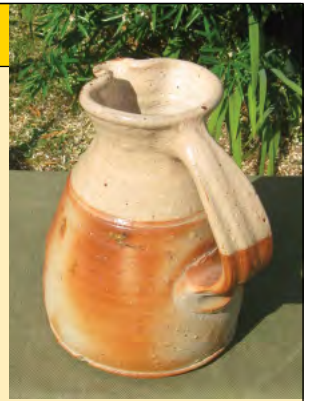
Going to make the bats more wacky colours in future methinks.

Holly

I bought this because...

... This is photo of a Nic Collins jug which we bought from him on the way home from a holiday in Cornwall. It was from when he worked at Powdermills Pottery in the middle of Dartmoor. I loved the way he attached the 'out of line' handle when I first saw his pots at Hatfield. It must take a lot of confidence to do that.

It took a couple of viewings to appreciate them but I now have grown to love his way of working. *Max Cowlin*



Membership News

A very warm welcome to Claire Friend who has recently joined Bucks Potters. We look forward to seeing you at the meetings, Claire. We hope you will enjoy being involved in the society. Claire has written a bit about herself and her work:

Claire Friend

I started pottery with an evening class with Ruby Sharp in Amersham in 2016, taking the opportunity for annual Raku firings. Last summer I signed up for a one day a week session at West Herts College and two days at Amersham College. I'm loving spending the extra time without having to rush to get things finished.

I like both hand building and throwing and am still enjoying trying new things, new clays and new glazes. Since starting at college, I've made lots of pots of increasing size but also have made a table top with deep carving and garden reed sculptures inspired by Chihuly.

I have been on two international courses. The first – a glazing course in Bali at 'Gaya Ceramic' where they have visiting tutors and the course was specifically on crystalline glazes. In the end, crystalline is quite a specialist thing but I liked the clay forms that the teacher used and decided it would also be a good way to start understanding glazes.

More recently, I went on a large pot throwing and alternative firing course at 'The Almond Grove' workshop in Greece. The course is a week long, normally with four people (now possibly going to be with three for social distancing) and the focus is mainly on throwing larger pots. Interspersed with this were alternative firings and the basics of how to start producing your own glazes.

Both courses were great. The Greek one is much more price accessible as it is based in Thessaloniki. It is taught by an Australian, Hector Marvidis, an artist who specializes in clay and who loves teaching.

With college closing on lockdown, I bought a wheel and have now got a garage full of pots waiting for glazing. Not driven commercially, I like just to be able to produce things that I enjoy making. The next step will be to moving towards making my own glazes. *Claire*



Sadly we are reporting the loss of two very prominent past members of the society: Joan Davies and Stafford Dobson. Thank you to Max Cowlin and Chris Inder who have written about them for us.

In Memory of Joan Frances Davies 1933-2020



Joan Davies (centre) in 2014 and Stafford Dobson (right)

It is with great sadness that we heard from her husband John that Joan had died in February after a short illness aged 86. Joan was a founder member of the society and took a leading role for many years, being chairperson, serving on the committee and helping to organise the Annual Exhibition along with her good friend Winifred Mitchell among others. She continued to take a keen interest in ceramics and attended our monthly meetings until quite recently. She often told me about the motorhome holidays she enjoyed with John travelling around Europe.

We send our condolences to John and their children. Joan gave a great deal to the society and she will be greatly missed by all who knew her.

Maxwell Cowlin

In Memory of Stafford Arthur Dobson 1935 -2020



Stafford at a 2014 BPSS meeting and his distinctive work

Stafford had been a member of the society for 15 or more years, being the compiler and editor of the newsletter for about 10 of those years. He also took part in and helped with setting up the annual exhibition for many years. I had the pleasure of being on the committee at the same time as Stafford, he was an interesting and lovely chap, a real gentleman.

You may have known him through the society, pottery courses at Missenden Abbey or Langley College or perhaps you visited him during Open Studios. He was always ready to help fellow enthusiasts and keen to introduce potters and sculptors to the society. His sculptures were distinctive and a fair few could be seen on the garden walls of his home in Naphill.

He will be fondly remembered by all those who knew him.

Chris Inder

Bronwen Corral

Bronwen Corral will be replacing Jeremy White as Treasurer after Lockdown. Here she gives us an insight into her background:

'I was a member of HM Diplomatic Service for 34 years, during which time I maintained an interest in all types of craft particularly those of the countries where I lived. In 2001 I enrolled on an Arts Foundation Course in Banbury, followed by a BA in Design Crafts from De Montford University. I received an MA in Ceramics from Cardiff School of Art and Design, UWIC in 2009. I work part-time from a small studio at my home in Prestwood. The themes of my work are the vessel as a medium for artistic expression and the infinite variations within any natural population. I make small groups of thrown and turned vessels, each different but each reflecting others in the group.

I was in charge of accounts in most of my overseas postings and I have been treasurer of a small Women's Institute in Warwickshire.' *Bronwen*

Messages from Jane Ostler

What a strange year it has been so far. Who could have imagined this back in January. As a society we have managed to hold it together, and huge thanks must go to Richard for his original 'keeping insane' thought, and to Yvonne and Adam for uploading and managing all the challenge entries.

This has given us all something to think about every couple of weeks and work with whatever we have to hand so that people without access to either a kiln or clay can still take part.

Whether we send an entry in or not we can view and vote for other people's inventiveness. We have had guest entries, and even gained one new member, (Claire Friend, opposite page) so that is a good sign.

Looking forward to when we can all meet up again face to face, and if you need further inspiration I found an article from www.oldforgecreations.co.uk titled: 'Pottery in Lockdown', which has lots of ideas and tips.

With a lot of reopening happening, we are beginning to see a some hope that with careful planning and additional safety measures in place there can be light at the end of the tunnel.

Jane

Potfest 2020 – News on dates

Having taken time to consult with the exhibitors from each show and the three venues, the organisers have decided to push the show dates back for all three Potfest events to the end of summer.

IN SCOTLAND: 25th – 27th September. Returning for its 24th year, Potfest Scotland is set on the lawns of Scone Palace on the outskirts of Perth.

IN THE PARK: 4th – 6th September. With the backdrop of Hutton-in-the-Forest, Potfest in the Park is set out on the lawn of the grounds on the edge of the Lake District National Park.

IN THE PENS: 30th Oct – 1st Nov. Set in Skirsgill Auction Mart, Penrith. Potfest in the Pens has a hands on energy, just potters and public in a down to earth setting.

Potfest continue to monitor government advice and investigate ways to keep both exhibitors and visiting public safe and well. For any further updates visit: potfest.co.uk



2020 Pottery/Sculpture COMPETITION

The theme for this year's
'Peter Stocker Ceramic Award'
will be:

'Performance'

£75 for First Prize

The competition is open to all artists,
not just members and must contain
a ceramic element.

There are no other specifications.

**The competition will be judged
at the November meeting.**

Raku Day

Date: Sunday, 23 August

Elaine, Richard and Carol are once
again holding this event in Elaine's
garden in Chesham Bois.

Isn't it great to have an event to
look forward to!

More details to follow soon.



BPSS website

MEMBERS GALLERY


Are you aware of the Members Gallery section on the
BPSS website?

You can add your profile with an image of your work in
this section. It would be fantastic if we could have more
of the membership represented there. So, if you like to
contribute please send an image and a few words
(anything up to about 50 words).

About the society

The Society was formed in 1963 and welcomes all artists
working in 3D. Individual membership costs £20; £30
for a family and £12 for full-time students. Membership
provides access to monthly demonstrations, several hands-on
workshops, and a quarterly newsletter. We are on facebook
and members can put an image and contact details on the
Society's web page www.buckspotters.com

The Committee

The Committee meets regularly to develop the programme,
organise the Annual Exhibition and review costs. If you
find a good speaker who could demonstrate to the Society,
please tell us. Also, if you have ideas you would like to
raise with us, please do so at the monthly meeting. 

GDPR information

The information which you provide to us on your
membership form will be used solely for the purpose of
processing your membership and dealing with you as a
member of BPSS. The data will not be shared with any
third party for marketing or commercial purposes without
obtaining your explicit consent. Our GDPR policy is
available to read on the BPSS website.

POTTERYCRAFTS LIMITED

"Touching earth through the hands of a potter"

Roderveld wheels, equipment &
POTTERYCRAFTS kilns are built by our
dedicated team to an exceptionally
high standard at our warehouse in
Stoke-on-Trent, England.



"Our UK manufactured
Wheels & Kilns"



"For the beginner and expert
in ceramics & pottery"

- Kilns
- Wheels
- Glazes & Stains
- Raw Materials
- Bisque & Moulds
- Extensive Range of Clays
- Helpful & Friendly Advice



PotteryCrafts Ltd

Campbell Road, Stoke-on-Trent, ST4 4ET



Tel: 01782 745000 www.potterycrafts.co.uk
Fax: 01782 746000 sales@potterycrafts.co.uk