



# Bucks Pottery and Sculpture Society

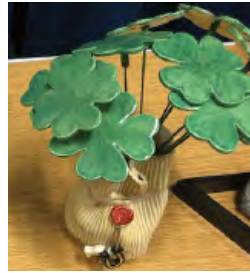
## Newsletter, March 2019

Hi members. Welcome to the March issue. Great to see the spring is back after our temporary return to winter. Now we can get our pots out into the sunshine to dry out a bit! Only a few weeks to go before the exhibition in Berkhamsted in April. I was so pleased that I made it to CAL. By the Thursday morning before the event, it was

sold out on-line for the mornings apart from Sunday. Luckily I got in without much of a queue at about 2pm on the Friday. It was fantastic and the exhibitors were quite different from two years ago, the last time I went. There was a lot of very precise porcelain work. I was quite blown away by the talent! Happy reading, Yvonne



Above: Richard presents the winner's trophy to Susan Horler



Above: The winning entries in order from first to third

## 2018 CHRISTMAS PARTY

Dorothea Reid

Although there were only 13 members at the Christmas Party it was great fun, with lovely food and mulled wine to provide even more cheer. Carol Read created a devious quiz, which caused much merriment. Can you give the answer to the following?.....Neither could our team! (We all live such a sheltered life). "How many fronds does a pot leaf have?"

Everyone had made a piece of work on the theme of 'Pot Luck'. The winner was Susan Horler with her bag of four-leaf clovers on metal stems. The bag looked incredibly realistic – like corrugated cardboard – a very professional piece of work.

Carol Read won second prize with three small, lidded pots, which each had different designs inside. Dorothea Reid won third place with a pot-bellied Santa dish containing various mystery parcels – Max picked the jackpot parcel!

Max had also made a 'lucky dip' entry. Claire Fallowfield and Paula Sutton each won one of Max's tiny little pots.

Elaine raffled her beautiful wood-fired tea bowl, which I am pleased to say, I won! I love it!

Overheard at the party "you ain't seen my saggars" – to which Richard could only say – "no, I haven't", before we all fell about laughing.



Dorothea & 'Santa Sweetie Dish'



Max's 'Pot' luck entry



Claire and Paula with Max's lucky dips



Paula's entry

## 25 January MEETING

## CAROL, RICHARD & JEREMY save the day!

Yvonne Cornes

In the 10 years since I've been a member, this is the first time that the speaker didn't turn up! Chris Bowen was the culprit and he'd drawn a big audience. The evening still proved a success through the quick thinking of Carol, Richard and Jeremy who offered an impromptu 'questions and answers' session for us. They sat on the stage and shared their knowledge and experience of galleries, shows and Open Studios. They spoke about their recent projects and answered many technical questions.

Jeremy's latest work incorporates thread into his rock formation pieces. Richard and Carol had with them a maquette for a new garden sculpture concept which they are developing, combining wood, glass and light (see photo). Carol, Richard and Jeremy all answered the many varied technical questions thrown at them by the members. Answers also came from the audience and it turned into a general group discussion which was extremely informative.

Topics included: the use of glass in ceramics including trivet - slumped glass; water-proofing raku work using concrete sealant; the use of ceramic paper; the various shrinkage rates of clays and the technical variations between the different types of clay i.e. the ratios of silica, alumina and flux. We had an extended coffee session so it was an enjoyable and very sociable evening. Thank you Carol, Richard and Jeremy for a great evening.



## 22 February DEMO REVIEW

# DAVID AND LAURA WRIGHT

Yvonne Cornes

David was accompanied by his wife Laura who is known for her custom made aprons. David was wearing a very fetching example! These aprons are size adjustable and have a practical cross-over split in the front – which work especially well for throwing. (See back page for Richard's well chosen examples)

David studied Graphic Design and worked for Saatchi & Saatchi. He decided to try Blacksmithing / Jewellery but the courses were full so he opted for Pottery. He was never interested in throwing so hand-building took over for him. He works in a simple but professional way with very basic tools.

David demonstrated making two stoneware forms of which he'd brought finished examples. It was fascinating to watch his technique. He first made the rectangular form, beginning with a slab and heavily crosshatching the outer top edges of the slab before adding coils. When smoothing his coils, he works in different directions to stop the form from acquiring a 'lean' or 'stretch' in either direction. He finds this very important as the 'lean' can manifest itself a lot later e.g. in the kiln, due to the 'memory'. This altering in the working direction also applies to the 'bashing' of forms with a paddle. David prefers coils to extruders, finding this way of working quite therapeutic.

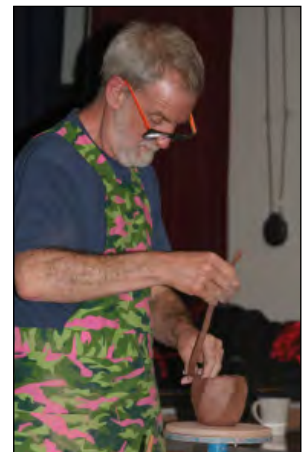
When making his circular forms he starts with pinch pots. He finds it important to allow 'drying out' periods during the shaping because the water is drawn out to the edge while working. He says that without doing this, the result can be a pancake. The linear curved shapes on his roundish bowls gradually emerge by patting the shape with a stick.

David mainly uses Grogged Pink from Potclays (terracotta mixed with crank). He finds that his pieces cannot hold water even if they are glazed. He thinks this is due to the high grog content which makes the pots porous. He is a big fan of Potclays, partly because their clays don't dry his hands out as much as Scarva clays. Potclays will soon be bringing out a 'David Wright' clay.

Thank you David for a great evening.  
[www.davidwrightpottery.co.uk](http://www.davidwrightpottery.co.uk)

### More tips from David

- Hold coils vertically when attaching to the pot to stop them from breaking.
- Use the flat part of your fingers for making coils.
- Change direction when rolling slabs to avoid the clay stretching later by itself.
- Low fired tiles are absorbent, so they make good surfaces to work on.
- David loves Mudtools kidneys with their colour coded variations in hardness.
- He sands his bisque fired pots before glazing.



## CHINA EXCHANGE

Carol Read

I have a friend who visits China on business. He has taken little bowls I have made over with him as gifts. The last couple of times he has brought me back something. Last time it was small packets of clay (500g), one of which was porcelain. I made more little bowls which he took back with him. One was given to the head of a pottery in Hunan Province.

To the right is the pottery I was sent in return. These celadon pieces have an amazing crackle effect, with what appears to be the red of the clay coming through. I don't know how it is achieved – my friend was told it is a naturally occurring effect. Fascinating!



*These are my little bowls*



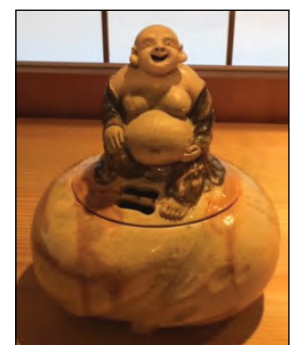
*Here is the pottery I was sent in return.*

## JAPANESE EXPERIENCE

Tracy Phillips

In February this year I made a trip to Japan with Chris Bull.

Whilst there we threw some pots and visited the Raku Museum in Kyoto.



*Incense burner - Raku Seinyū XXX111*



## NEWS & INFO

### ELAINE WELLS – Delivery Offer

Elaine has very kindly offered a delivery service from Stoke-on-Trent:

“As I live in Stoke-on-Trent during the week and come home most weekends, if anyone needs me to bring clay or other supplies back from Potclays, Valentines or Potterycrafts they should contact me.”

[elainewellspotter@gmail.com](mailto:elainewellspotter@gmail.com)

Many thanks to Elaine.

### MEMBERSHIP RENEWAL

*Jane Ostler*

Dear members, it is that time of year again when membership renewals are due. Our membership year runs from 1st April to 31st March. You should all have received a reminder email or letter with the renewal form for the coming year. Membership remains very reasonable at £20, or £12 if you are a full time student, or £30 for family membership. If for any reason you are not renewing this year please let me know so that I can remove you from the mailing list.

Best wishes,

Jane Ostler, Membership Secretary.

### 2019 ANNUAL EXHIBITION

Whether you're showing or planning on visiting the exhibition, here are the details of the new venue:

**Open Door Gallery,**  
360-364 High Street, Berkhamsted,  
HP4 1HU.

**Delivery of work:**

3-6pm Tuesday 23 April,  
(The work will be set up on  
Wednesday 24th April.)

**Exhibition dates:**

Thursday 25 April - Sunday 5 May.

**Collection of unsold work:**

4pm Sunday 5 May.

The entry forms and more information will be sent out by email.

You will also be receiving flyers by email to print and display and to send on to your contacts.



## UP AND COMING BUCKS POTTERS MEETINGS

at Little Kingshill Village Hall, HP16 0DZ



### Elaine Wells – 8pm, 26 April

Bucks Potter – Elaine is nearing the end of a two year Studio Pottery Diploma Course at Middleport Pottery, Stoke-on-Trent. She will demonstrate for us and speak of her experience there. Elaine was a competitor on the Great Pottery Throwdown TV series. Following the programme Elaine gave us a very entertaining evening so this is a welcome return and update on her development and direction.

WATCH THIS  
SPACE

### 8pm, 24 May and 28 June

The speakers for these dates are in the pipeline but as yet are unconfirmed. Members will be advised by email and details will also appear on the website once confirmed.

### RAKU DAY Saturday 13 July

This summer annual event is always popular. After the last two years' success, Elaine Wells has kindly agreed to hold the event again in her garden in Chesham Bois. Carol and Richard will be running raku firing and Paula and Irénke are setting up smoke firing. More details to follow.



### MARLOW ART & CRAFTS SOCIETY ANNUAL EXHIBITION 2019

Friday 24th - Wednesday 29th May.  
All Saints Church Hall, Marlow. SL72AA.

**GUEST EXHIBITORS WELCOME**

Full entry details from  
Maxwell Cowlin:  
[maxwellcowlin@talktalk.net](mailto:maxwellcowlin@talktalk.net)  
01628484522

### ROOM ART GALLERY – Mill Valley, San Francisco, USA

On my way back from a trip downunder for Christmas, I visited a friend who works at this gallery. The ceramics shown here were made locally. Mill Valley is a lovely leafy area with several good art galleries. Well worth a visit if you're over that way. *Yvonne*



Work by  
Suzanne Long



Ceramic work by  
Melanie Stone

*I bought  
these  
because...*

... I have bowls a plenty and certainly don't need any more, but need doesn't really come into it. I saw these and loved the shape, colour, and feel of them. Just ordinary little anonymous handmade bowls but I love them!  
*Jane Ostler*



## Some dates for your diary

Date	Event information	Venue
6 April – 13 July	<b>Samurai : Warriors of Ancient Japan</b> Historical Samurai armoury and weapons. <a href="http://www.buckscountymuseum.org">www.buckscountymuseum.org</a>	Bucks County Museum, Church Street, Aylesbury, HP20 2QP
25 April – 5 May	 <b>BPSS Annual Exhibition</b> See previous page for more details.	Open Door Gallery, 360-364 High Street, Berkhamsted, HP4 1HU.
26 April	 <b>Elaine Wells demo</b> See full details on previous page	Little Kingshill Village Hall. HP16 0DZ
24 – 29 May	<b>Marlow Art &amp; Crafts Society Annual Exhibition</b>	All Saints Church Hall, Marlow. SL72AA
24 May	 The speaker is yet to be confirmed. Members will be advised by email & details will also appear on website.	Little Kingshill Village Hall. HP16 0DZ
8 – 23 June	<b>Bucks Art Weeks 2019.</b> Wonderful creative work of contemporary artists and makers in Buckinghamshire County.	Various
21-23 June	<b>Earth &amp; Fire 2019</b> – One of the country's premiere ceramic events. <a href="http://www.earthandfireceramicfair.co.uk">www.earthandfireceramicfair.co.uk</a>	The Harley Gallery, Welbeck, Notts, S80 3LW
28 June	 The speaker is yet to be confirmed. Members will be advised by email & details will also appear on website.	Little Kingshill Village Hall. HP16 0DZ
5 – 7 July	<b>International Ceramics Festival 2019</b> – Demonstrations, firings, talks, discussions, films, exhibitions, performances. <a href="http://www.internationalceramicsfestival.org">www.internationalceramicsfestival.org</a>	The Arts Centre, Aberystwyth University SY23 3FL
13 July	 <b>Raku Day</b> – See previous page and separate leaflet to follow for more details.	Gardendene, 33 Bois Lane, Chesham Bois, HP6 6BT.

Continued from page 2:

**Richard demonstrates and models his Laura Wright aprons.**



Left and below:  
At Art in Clay, 2012


Below: May 2011 during his demo at Bucks Potters



### About the society

The Society was formed in 1963 and welcomes all artists working in 3D. Membership costs £20, £30 for a family and £12 for full-time students. Membership provides access to monthly demonstrations, several hands-on workshops, and a quarterly newsletter. We are on facebook and members can put an image and contact details on the Society's web page: [www.buckspotters.com](http://www.buckspotters.com)

### The Committee

The Committee meets regularly to develop the programme, organise the Annual Exhibition and review costs. If you find a good speaker who could demonstrate to the Society, please tell us. Also, if you have ideas you would like to raise with us, please do so at the monthly meeting or email. 

### GDPR information

The information which you provide to us on your membership form will be used solely for the purpose of processing your membership and dealing with you as a member of BPSS. The data will not be shared with any third party for marketing or commercial purposes without obtaining your explicit consent.

Our GDPR policy is available to read on the BPSS website.

# POTTERY CRAFTS LIMITED

"Touching earth through the hands of a potter"

Roderveld wheels, equipment & POTTERY CRAFTS kilns are built by our dedicated team to an exceptionally high standard at our warehouse in Stoke-on-Trent, England.



"Our UK manufactured Wheels & Kilns"



"For the beginner and expert in ceramics & pottery"



- Kilns
- Wheels
- Glazes & Stains
- Raw Materials
- Bisque & Moulds
- Extensive Range of Clays
- Helpful & Friendly Advice

PotteryCrafts Ltd  
Campbell Road, Stoke-on-Trent, ST4 4ET



Tel: 01782 745000 [www.potterycrafts.co.uk](http://www.potterycrafts.co.uk)  
Fax: 01782 746000 [sales@potterycrafts.co.uk](mailto:sales@potterycrafts.co.uk)