



Bucks Pottery and Sculpture Society

Newsletter, September 2022

Hi members.

Welcome to the September newsletter. What a summer it's been. Great weather for the summer events but didn't clay just dry too quickly for hand building! Great for a quick dry for finished pieces though.

It's a busy newsletter with lots of info sent in so thanks very much if you did.

Very sad news about Chris Bull passing away. Many of our members knew her well. We feature a tribute and messages by Jane and others.

I was fortunate to spend a week in Skopelos, Greece with Donice during her residency (see her article inside). Very inspiring.

We have plenty of incentives for making with the November exhibition coming up and also the annual competition. It will be judged at the last meeting of 2022 on 25th November (see info inside). You don't need to bring an entry to enjoy this festive evening. Come along for the making session and to place your vote in the competition. It will be a fun evening as always. Happy reading. Yvonne

24 June
LIVE DEMO

Gemma Gowland

- Yvonne Cornes

Gemma comes from a family of painters. She gave us a talk accompanied by a slideshow taking us through her creative development which began at the age of two and a half. At this pre-school age, as her mother was ill she spent a lot of time in her father's workshop. They had a motto "We can make anything". When she went to school, after some persuasion by her father, the teachers agreed to include girls in the woodworking class. Later she went on to study engineering and product design specialising in catering equipment. She eventually taught woodwork and metalwork for 20 years.

She left teaching to make animals and was artist in residence at Birdworld. She studied sculpture and gained a diploma at City Lit where she studied under Royal College of Art tutors. From 2014 she has concentrated on sculpture with a bit of teaching. Gemma's artistic influences are Rachel Kneebone, Annie Turner, Claudia Clare, Beth Caverner-Stichter, Eddie Curtis and Eduardo Chillida.



Early Programming

Due to her early life restrictions and expectations as a female, Gemma highlights these issues in her sculpture. She uses masks for her figures to represent how we learn to wear masks in life. In her work the stance of the character is important for suggesting personality due to the mask being generic.

Gemma demonstrated making two 'whispering dolls'. She uses packing plastic for the base support on a turntable.

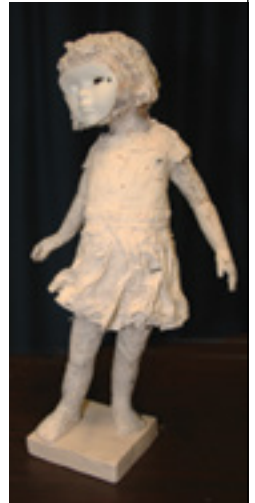


She put paper straws into the base for inside the limbs (better than plastic which makes clay crack). Paddle wooden sticks for extra support for the model (see above). She uses Potclays white grogged stoneware and also soda ash added to her own Porcelain paper clay. Porcelain shrinks more than the stoneware which she likes as it creates cracks.

When she sculpts the form she moves her fingers in the direction of the muscle - like drawing in clay. She finds a plastic tool is better than wood for the small delicate parts. The eyes are air holes and the paper straws also create air holes.

The clothes are specially sewn to fit the dolls, then the slip is applied over the top. The fabric burns away in the kiln, leaving just the slip. Gemma fires to 1300°C for the first firing with rutile or clear glaze. The 2nd firing is to 1235°C, after she applies the porcelain slip.

Gemma exhibits widely and was at Art in Clay 2021 and at Celebrating Ceramics this year. www.jgowland.com



RAKU DAY JULY 2022

A big thank you once again to Elaine Wells for hosting the Raku Day and to Richard and Carol for their expertise in running the many raku firings and also some obvara. It was fun as always and nice to be back to normal after the Covid restrictions last year. We were so lucky with the beautiful weather.

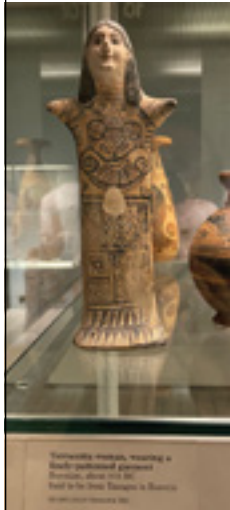


Ceramic Residency in Greece

– Donice Sousa

In August I flew off to the beautiful island of Skopelos (where Mama Mia was filmed) to spend a two week Ceramics residency at the Skopelos Art Foundation.

I came across this residency by chance while looking for residencies in Japan. They asked for a proposal which related to Greek culture in some way or other and without thinking I came up with the idea of using Terra Sigillata and relaying a modern narrative in the same way the ancient Greeks had used their pots as a canvas for story telling.



So off I trooped to the British Museum to find inspiration. Sadly nearly all Greek pots are thrown and I'm not much good at that so I concentrated on what was not thrown and eventually a small terracotta figurine from Boeotia caught my eye (see left). She was perfect for my story.

My research on all things Greek took me to the Greek gods. The one I liked the most - her being a lady and all - was Athena, the goddess associated with wisdom, warfare and handicrafts. She was the obvious choice!

Furthermore my research was taking place at the time when Russia started to invade Ukraine. I have always thought of myself as a pacifist in principle but the plight of the Ukrainians made me realise that when faced with a tyrant you have to fight. President

Zelensky seemed to be shaping up as Athena. Like Ukraine, Athena was not an aggressor, she did not want to fight but when backed into a corner she had to come up with a winning strategy in order to restore peace.



And so Athena was born... and subsequently made in Greece (see above). On her chest is the Greek symbol of strength. Below it is the all-seeing eye necessary for warding off evil and overseeing battle. To her right side is the symbol of Athena and on her left the symbols of imperialism and oppression. The red tips of her nipples represent the blood of the dead soldiers and their coffins girdle her thighs.

On her back (see right) the olive branch intertwines with the peace sign but overshadowing all are the tank tracks spelling out the horrible "Z" which has become the symbol of Russian tyranny under Putin.

Making this piece did not go smoothly but that's another story... I had a most enjoyable two weeks and I am already looking for my next residency.

Donice will write more about her experience in the Greek Residency in the next newsletter.



A Tribute for Chris Bull. RIP

– Jane Ostler

As you have probably heard by now local potter Chris Bull sadly passed away on Thursday 18th August. She was a much loved and respected potter/ teacher/ and friend to many Bucks potters. She taught ceramics at GCE 'A' level, and ran the Studio Potters Course at Evreham Adult learning Centre, exhibited at many Bucks open studios, and worked from her studio 'Meadowcroft pottery' in Asnett.

Comments from some Bucks potters:

"Chris was my pottery teacher for many years – I started attending evening classes around 1974 and, within a year or so, found the perfect teacher in Chris Bull. She was great – encouraging, knowledgeable, and so very patient and cheerful. I stayed with her right up to when she eventually gave up her evening classes a few years ago. Chris was known by so many people in our pottery community and will be desperately missed. I know that the pieces of her work that I own and the ones I made under her tutelage will always be treasured." *Paula Sutton*

"For the past 25 years our lives have been full of Christine's work in pots that we see and use all the time. All the knowledge, inspiration and shared moments of success and being asked if we have kept a note of what we did. The fun of Raku days with much laughter and oh so much hard work put in by Chris, food and wine while assessing results of the day. These memories of a wonderful friend and teacher will be in our hearts forever (not forgetting the best cakes and biscuit's made for the summer school.)" *Joy Arucci and Debbie Shaw*



"Such sad news. I started pottery with Chris many years ago at evening classes. She passed on her love and enthusiasm for clay in all its forms, and particularly raku. Like others I have many of Chris's pieces in everyday use at home. Great memories, and a very sad loss." *Jane Ostler*



Studio For Rent

Chris Bull's husband Duncan is keen to try and rent out her studio so if you or someone you know is interested please get in touch.

Meadowcroft Pottery is equipped with:

- preparation bench (inbuilt wedging)
- Two wheels (Fitz William and Clayglaze)
- A dry spray booth and glazing area
- Two 7kw electric kilns: One 22" x 18"; the other 18" x 22"
- Air extraction fan
- A 3kw test kiln
- Laser Gas Kiln
- Pugmill
- Drying racks
- Loads of raw materials
- Office area
- Materials storage areas including frost protected clay store
- Many other features including internet access

You can phone Duncan on:

01844 343515

or email:

duncan@meadowcroft-pottery.co.uk

SOCIETY NEWS

A very warm welcome to our new members: **Caroline Newland-Smith, Helen Waters,** and **Nicola Peiser.** We hope you will enjoy being involved in the society.

Caroline has written a few words about herself.

Caroline Newland-Smith

I have been potting for about 15 years and specialise in wheel thrown pots in stoneware and porcelain, decorated with slips, underglazes and oxides before glazing.



I make domestic ware in parallel with my more articulated, complex sculptural pieces crafted from multiple thrown sections. Much of my work draws on architectural inspiration both ancient and contemporary, reflecting my long career as an architect, but recently I have been exploring abstracted human forms that form sculptural pieces for home or garden.

Much of my work can be seen at this website: <http://thewinslowgroup.co.uk/artists.php>

An update on Robert Tasker's studio

In recent days I've finally finished constructing my new insulated studio space 12'x16' & hauled everything out of storage. These pics are from while the studio space was briefly empty.



(It doesn't look like your dogs were fooled for a minute by your flooring Robert!)



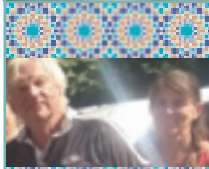
UP AND COMING BUCKS POTTERS MEETINGS

at Little Kingshill Village Hall, HP16 0DZ



Allen Richards – 8pm, 28th October 2022

Allen specialises in creating his own flambe and lustre glazes. He started as a brick carver but has progressed into art deco throwing forms and vessels and currently works on a lot of ceramic historic reproductions.



Richard Ballantyne & Carol Read Making Session / Annual Competition Prize Giving & Festive Evening – 8pm, 25th Nov 2022

Richard and Carol's workshops are always fun. We can get hands on and create under their guidance. In the break it's the 'Vote' for your favourite competition entry & £75 prize-giving for the winner. (See ad at the bottom of this page).



Gin Durham – 8pm, 27th January 2022

From an early age Gin has been fascinated by animal behaviours and the way in which they are represented in culture, particularly in the genre of storytelling. Her quirky and imaginative ceramics are inspired by imagery shaped by treasured tales, into beautifully sculpted work, rich in humour, character and detail.

BPSS NOVEMBER EXHIBITION

After the success of the last two exhibitions at Oldham Hall, we're also having one there in the run-up to Christmas. The drop off will on Friday 18th November between 3 & 4pm.

The preview will be that evening from 7-9pm and the exhibition will be open to the public on Saturday: 10am to 5pm and Sunday: 10am to 4pm.

The address is: Oldham Hall, Great Missenden, Church Street. It is part of the St Peter & St Paul Parish Church, HP16 0BA.

YOU'LL LIKE THIS:

This time, as a trial, we're charging a reduced fee of £1 per entry for items priced £10 and under. Items priced over £10 remain at £2 per entry.

Also as a trial, we are reducing the BPSS commission on all sales from 25% to 20%. So members will be receiving more profit than before. As these two changes are trials we'll decide after the event whether this will be viable for future exhibitions. The entry forms will be sent to members closer to the time. So all we need to do for now is make!

Bucks Pottery & Sculpture Society
EXHIBITION
19th & 20th November
Saturday: 10am to 5pm, Sunday: 10am to 4pm
Oldham Hall, Great Missenden
Church Street, part of St Peter & St Paul Parish Church, HP16 0BA
FREE ADMISSION

Surface decoration for CERAMICS



Hot Off The Press

A new book by Claire Ireland on decorative techniques and inspiration for the ceramicist is available from November 2022. This practical and beautiful book covers a wide range of inventive, decorative techniques and encourages the maker to be adventurous and experimental. With so many ideas and clear, practical instructions, this book is an essential reference

for makers of all levels, with the potential to inspire a new creative body of work and the opportunity to build a repertoire of decorating skills.

Instagram: [ceramicsbyclaire](https://www.instagram.com/ceramicsbyclaire)

Website: www.claireirelandceramics.com

Email: claireirelanduk@yahoo.co.uk

2022 POTTERY SCULPTURE COMPETITION

The theme for this year's 'Peter Stocker Ceramic Award' is:

ARABIA

£75 PRIZE!

The members' vote and prize giving will take place at the 25th November meeting. Enjoy mulled wine & mince pies for this festive last meeting of the year.

The competition is open to all artists, not just members and must contain a ceramic element.

FOR SALE



Hand-built Wheel
- made by Jerry Finlayson
(well known to Anglian Potters)



Phoenix 51 Hobby Kiln
(51 litres)

Unused clay, glazes and potter's tools are thrown in.

Please contact: Charles Fortt: charles.fortt@btinternet.com
Charles is located in Beccles, Suffolk.

Beautiful Bucks

17 Sep – 5 Nov 2022

Landscapes by Brian Bennett at 95 and scenes from the museum's art collection.



Beautiful Bucks features work by one of the county's best-known landscape artists, Brian Bennett, who demonstrates an intimate knowledge of our local landscape. Brian Bennett, now in his 95th year, was born in Olney, Bucks and has devoted much of his life to painting scenes in the Chilterns.

Around 30 works will be on display and these will be for sale.

To accompany Brian Bennett's paintings, there will be a selection of landscapes from the museum's collection from the 19th, 20th and 21st centuries, including work by John Piper and John Nash.

B Discover Bucks Museum

Church Street, Aylesbury, HP20 2QP
www.discoverbucksmuseum.org

POTTERYCRAFTS

10% Discount for members

For those of you wishing to take advantage of the BPSS members' 10% discount with PotteryCrafts, you can call them on: **01782 745000**.

A list of members (names only) has been sent to them, to make verification easier for them. You will need to set up a PotteryCrafts account to enable them to set up the discount for you.

BPSS website

MEMBERS GALLERY

Are you aware that we now have a Members Gallery on the new BPSS website?

You can add a short profile with a few images of your work in the gallery. It would be fantastic if we could have more of the membership represented there.

POTTERYCRAFTS LIMITED

"Touching earth through the hands of a potter"

Roderveld wheels, equipment & POTTERYCRAFTS kilns are built by our dedicated team to an exceptionally high standard at our warehouse in Stoke-on-Trent, England.



"Our UK manufactured Wheels & Kilns"



"For the beginner and expert in ceramics & pottery"

- Kilns
- Wheels
- Glazes & Stains
- Raw Materials
- Bisque & Moulds
- Extensive Range of Clays
- Helpful & Friendly Advice





PotteryCrafts Ltd

Campbell Road, Stoke-on-Trent, ST4 4ET



Tel: 01782 745000 www.potterycrafts.co.uk
Fax: 01782 746000 sales@potterycrafts.co.uk

About the society

The Society was formed in 1963 and welcomes all artists working in 3D. Individual membership costs £25; £35 for a family and £10 for full-time students. Membership provides access to monthly demonstrations, several hands-on workshops, and a quarterly newsletter. Members can add their profile and a few images of their work to the Members' Gallery on our website www.buckspotters.com. Our facebook page is 'Bucks pottery and sculpture society' and we are on Instagram as 'buckspotters'. It would be great to have a few more followers.  

The Committee

The Committee meets regularly to develop the programme, organise the Annual Exhibition and review costs. If you find a good speaker who could demonstrate to the Society, please tell us. Also, if you have ideas you would like to raise with us, please do so at the monthly meeting or email hlinglis@gmail.com

GDPR information

The information which you provide to us on your membership form will be used solely for the purpose of processing your membership and dealing with you as a member of BPSS. The data will not be shared with any third party for marketing or commercial purposes without obtaining your explicit consent. Our GDPR policy is available to read on the BPSS website.